

# U.S.S. FRANKLIN

## PHOTOETCH SET

**PARA**  
**GRAFIX**<sup>TM</sup>  
PGX212

ParaGrafix states that our use of the trademarked terms listed below in our product descriptions constitutes fair use and nominative use and is in no way to offer confusion that ParaGrafix and any of the following noted trademark holders are related companies, nor do we state that we are endorsed by these trademark holders. We are an AFTERMARKET company acting in GOOD FAITH in providing high quality products to loyal customers who have already purchased products related to these trademarks. ParaGrafix is actually providing these trademark holders a venue of free advertising and indirectly provide these trademark holders with more sales leads. Star Trek is a trademark of CBS Studios Inc. Polar Lights, AMT and Round 2 are registered trademarks of Round 2, LLC.

### INTRODUCTION

Thank you for purchasing ParaGrafix's photoetch set for the U.S.S. Franklin kit from Moebius Models. We have made every effort to ensure that these parts can be used successfully by a modeler of modest experience, but there may be items that require advanced modeling techniques. For a basic primer on the use of photoetch, please visit <http://www.paragrafix.biz/instructions.asp> for printed instructions and <http://www.paragrafix.biz/video-instructions-1.asp> for videos.

### MATERIALS


In addition to the photoetch, you will also need scissors or a knife\* to remove individual pieces from the main fret, a file to remove material left from cutting, and super glue (aka CA or cyanoacrylate). Additionally, to fold some pieces, you will need a pair of razor blades\*\* or a specialty tool such as PhotoFold from ParaGrafix.

\* ParaGrafix carries Xuron photoetch scissors. If using a knife, we prefer a #17 Xacto chisel blade.

\*\* Extreme care must be taken when using razor blades. Risk of serious injury.

#### Key

Kit part (plastic): 

Photoetched part: 

### LOWER PRIMARY HULL

#### VERTICAL THRUSTERS

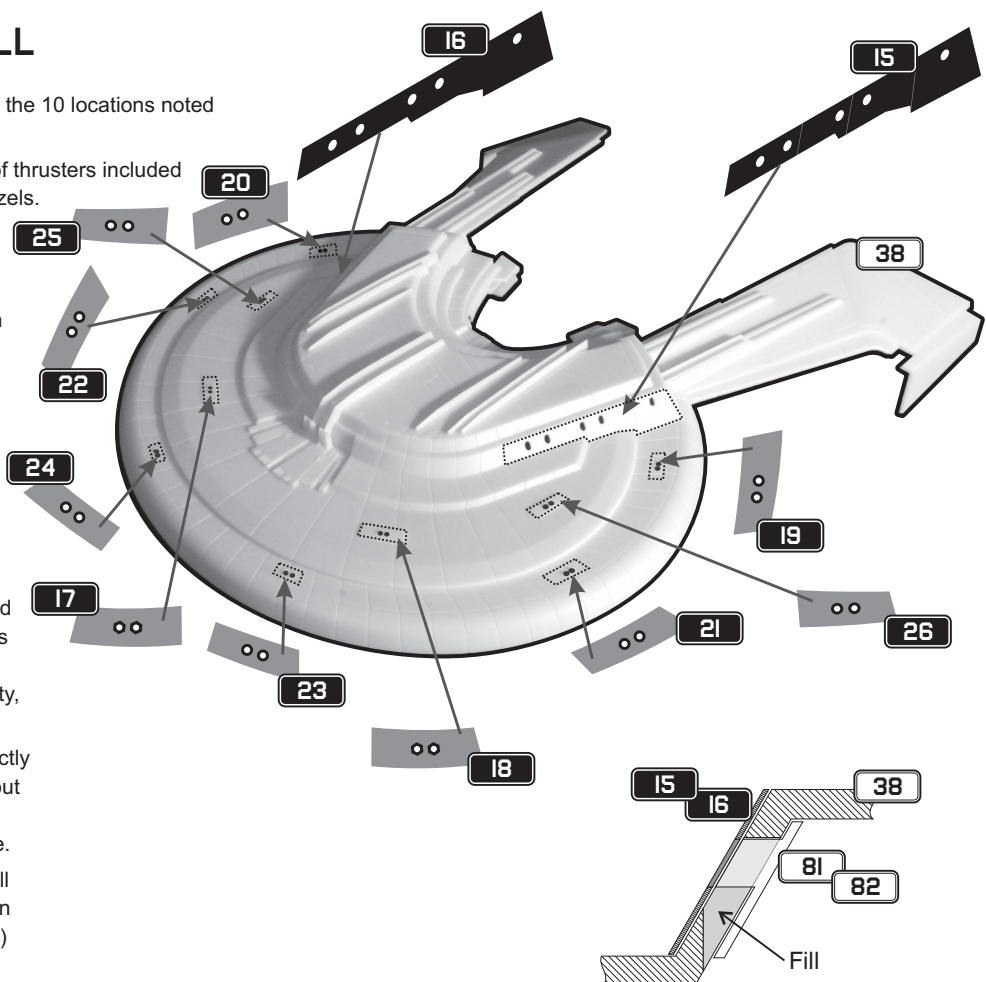
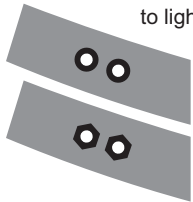
Remove the raised thruster detail from the 10 locations noted on kit part 38.

**NOTE:** There are two different styles of thrusters included incorporating round and hexagonal bezels.

The type used is up to the builder.

Attach the 10 thrusters as shown.

Note that these thrusters have through holes for those builders who wish to light the thrusters.



#### WINDOWS

The windows on the primary hull should be round. You can either use etch parts 15 and 16 as drilling guides to get the holes round after filling them in with putty, or you can graft them onto the hull.

Note that the kit's clear parts are correctly round. If you will be filling and drilling out the windows, make sure that the clear parts have a proper path to the surface.

If "planting on" parts 15 and 16, you will get a better appearance if you file down there they go by about 0.01" (0.25 mm) so the panels fit flush to the hull.

### UPPER PRIMARY HULL

#### WINDOWS

Please see the instructions on the previous page for installing the lower primary hull windows. For the upper primary hull, use etch parts 4 and 5.

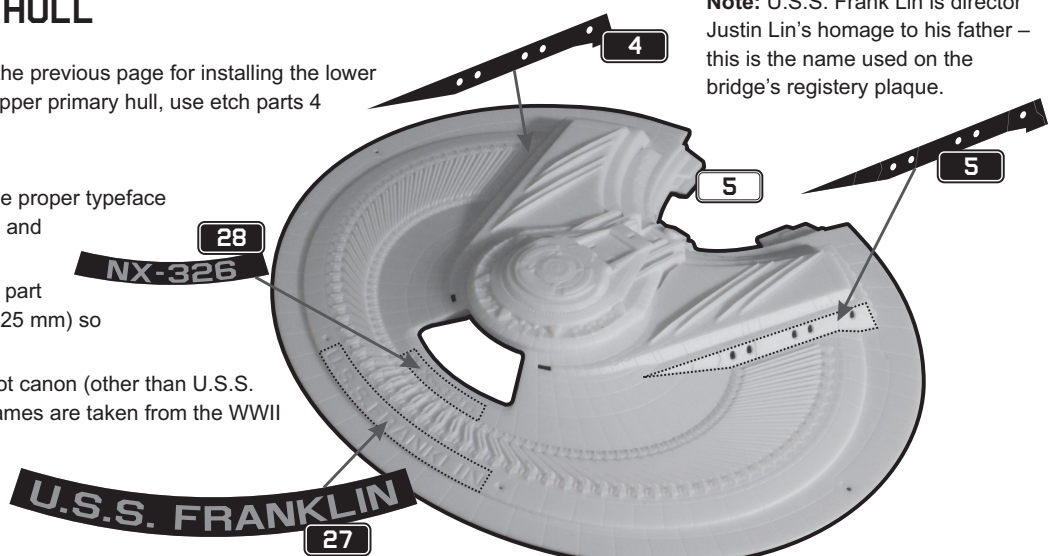
#### REGISTRY

Etch parts 27 and 28 provide the proper typeface and depth for the registry name and number.

For added realism, file down kit part 5 in these locations by 0.01" (0.25 mm) so that the etch parts fit flush.

The names and numbers are not canon (other than U.S.S. Franklin, NX-326). The other names are taken from the WWII aircraft carrier Franklin's sister ships.

**Note:** U.S.S. Frank Lin is director Justin Lin's homage to his father – this is the name used on the bridge's registry plaque.



## BRIDGE

### EDGE-LIT STEPS

Glue etch parts 9 through 14 together, in order, assuring that the outside edges of all parts are straight and flush. The "channels" on the backside of the steps funnel light to the step edges.

Be careful when painting so as not to fill the slender lighting slots.

**Note:** If you don't want to make the edge-lit steps, just glue part 14 to the bottom of the assembled bridge, 8.

### FURNITURE

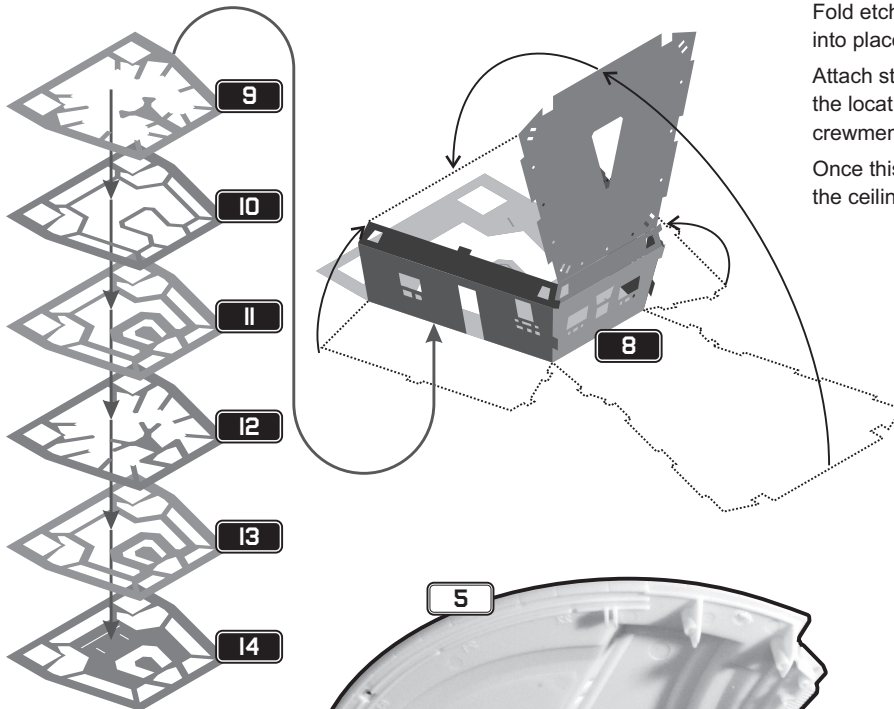
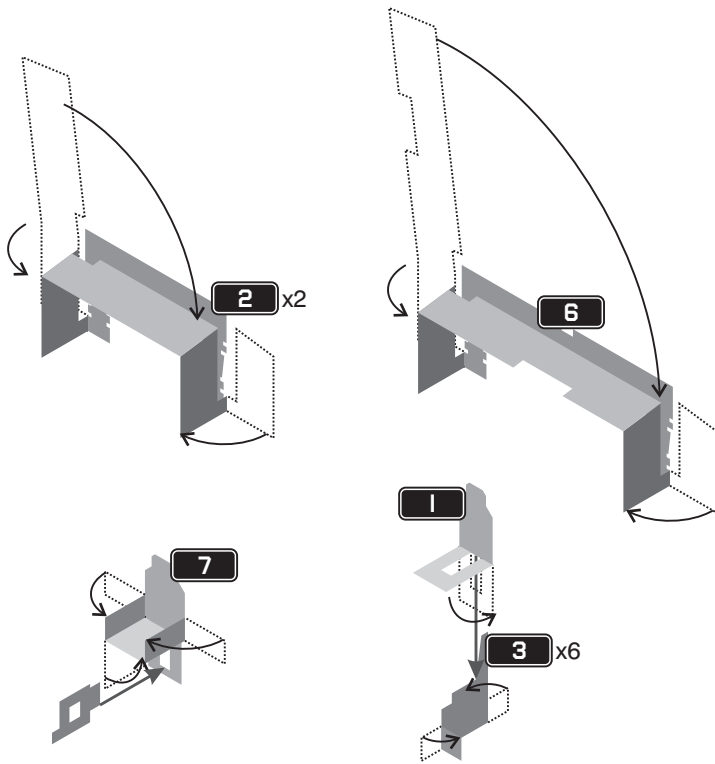
Because these pieces are so small, there are twice as many parts as required.

Assemble the captain's chair by folding the large etch part 7 and attaching it to the smaller part 7.

Assemble six duty station chairs (1 and 3) by folding each part as shown, then gluing together.

Fold the helm/navigation station (6).

Fold chair back/seat (1), and base (3), then attach to each other.

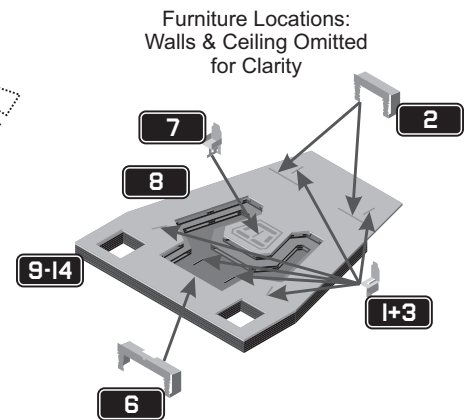


### BRIDGE STRUCTURE

Fold etch piece 8 as shown at right. Do not fold ceiling into place yet.

Attach steps assembly (9 to 14), then mount furniture in the locations shown below. You may also want to add crewmembers.

Once this assembly is fully dried, fold down and secure the ceiling.

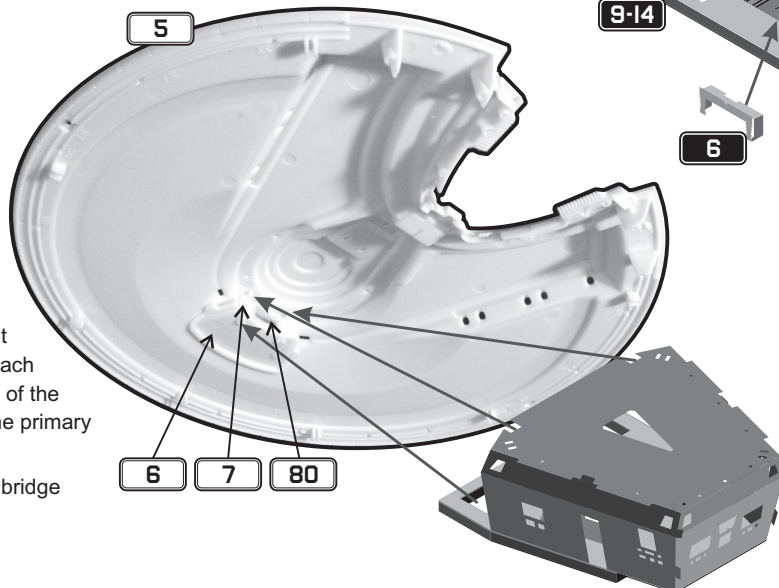


### INSTALL BRIDGE

Attach kit parts 6, 7, and 80 (clear) to the upper primary hull (5).

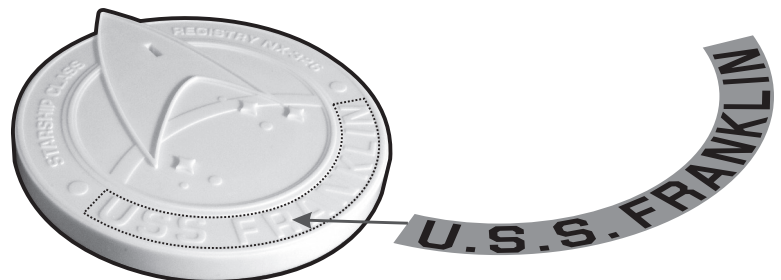
Attach bridge assembly so that the exposed holes in the floor fit over the mounting pegs that attach 6 to 7, and the slots at the front of the ceiling fit around the pegs on the primary hull, 5.

Note that you need to slide the bridge forward, then drop it in place.



### DISPLAY STAND (OPTIONAL)

Remove the raised "USS FRANKLIN" from the display stand and replace with the large "U.S.S. FRANKLIN" lettering.



Attleboro MA 02703 USA  
+1 508-431-9800  
www.ParaGrafix.biz

Thank you to Moebius Models for their kindly supplying a test shot of USS Franklin for development of this photoetch set.

Original items copyright © 2018 Paul H. Bodensiek dba ParaGrafix. All Rights Reserved.  
ParaGrafix is a trademark of Paul H. Bodensiek.